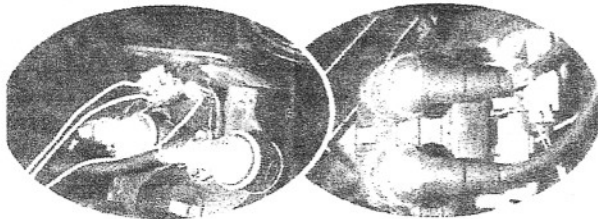
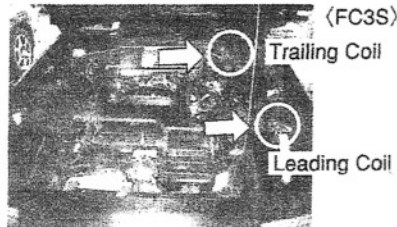


MAZDA-1

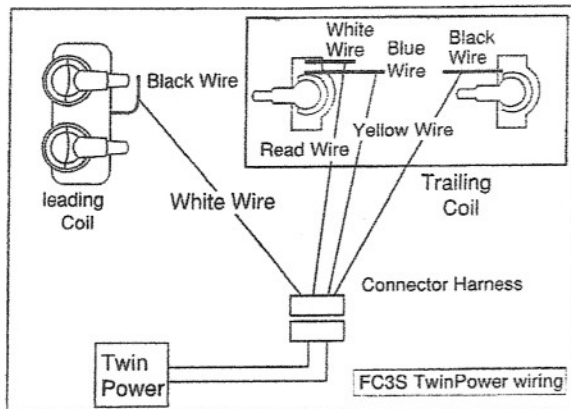
Vehicle	Model	Year	Engine	Displacement
RX-7	FC3S	85/9~91/10	13BT	1.3L
Twin Power Type		TYPE--ROTARY		
Power Supply Connector	Trailing coil, positive coil wire			
Power Supply Wire Color	White			
Signal Connector	Trailing coil, negative coil wire Leading coil, negative coil wire			
Signal Wire Number	3			
Signal Wire Color	Trailing : Blue, Black Leading: Black			
Remarks	Connect the yellow wire on the connector harness to the trailing wire (Blue, Black), and connect the white wire on the connector harness to the leading wire (Black).			

Confirm the location of the ignition coil's terminal.



(Power Supply/Signal)
(Trailing Coil)

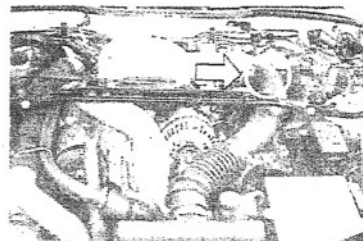
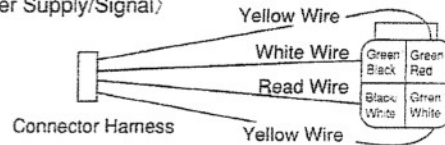
(Signal)
(Leading Coil)



MAZDA-2

Vehicle	Model	Year	Engine	Displacement
RX-7	FD3S	91/11~03/1	13B-REW	1.3L
Twin Power Type		TYPE--ROTARY		
Power Supply Connector	4 pin black connector			
Power Supply Wire Color	Black/White			
Signal Connector	Same as the power supply connector			
Signal Wire Number	3			
Signal Wire Color	Green/Black, Green/Red, Green/White			
Remarks	Connect the white wire on the connector harness to the green/black wire, connect the yellow wires on the connector harness to the green/red and the green/white wires.			

(Power Supply/Signal)

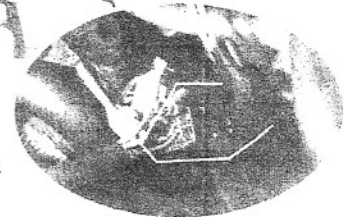


(Wiring for the 4 pin Black connector)

See the coil position on page 8.

(FD3S)

※The 4 pin black connector is located under the resinous pipe.



(Power Supply/Signal)

